

Flat 1/5, 170 Elmbank Street, Glasgow, G2 4NY

Offers Over £125,000



Fantastically located corner first floor flat in a great city centre location within Lions Chambers. Only a few minutes walk from Glasgow University, Strathclyde University, Glasgow Caledonian University, a myriad of local attractions, amenities and transport links. Accommodation consists of Lounge, Kitchen, 1 Bedroom, Bathroom, Double Glazing, 2 x large walk-in storage cupboards and Courtyard.



POLLOCK & MCLEAN
SOLICITORS FOR YOU AND YOUR FAMILY

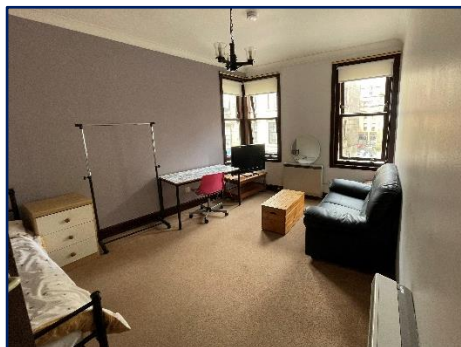
WWW.POLLOCKMCLEAN.CO.UK



Pollock & McLean
41 Castle Street
Dumfries
DG1 1DU
01387 255414

Hall - 3.7m x 2.2m
Entry to lounge, kitchen, bedroom, bathroom & 2 x large walk-in storage cupboards.

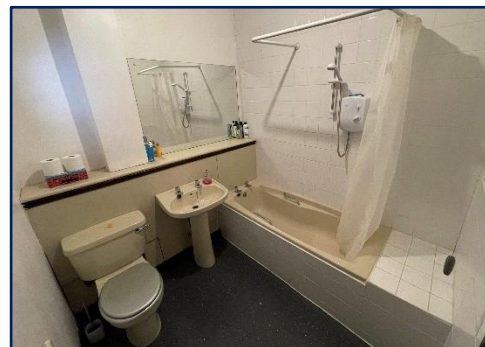
These particulars have been carefully prepared by Messrs Pollock & McLean, Solicitors and Estate Agents. Although believed to be correct they are not guaranteed and therefore prospective purchasers should satisfy themselves as to the basic facts before submitting an offer. All photographs have been taken using a wide angled lens.



Lounge - 5m x 3.5m
Triple aspect windows to front and side. 2 x storage heaters.



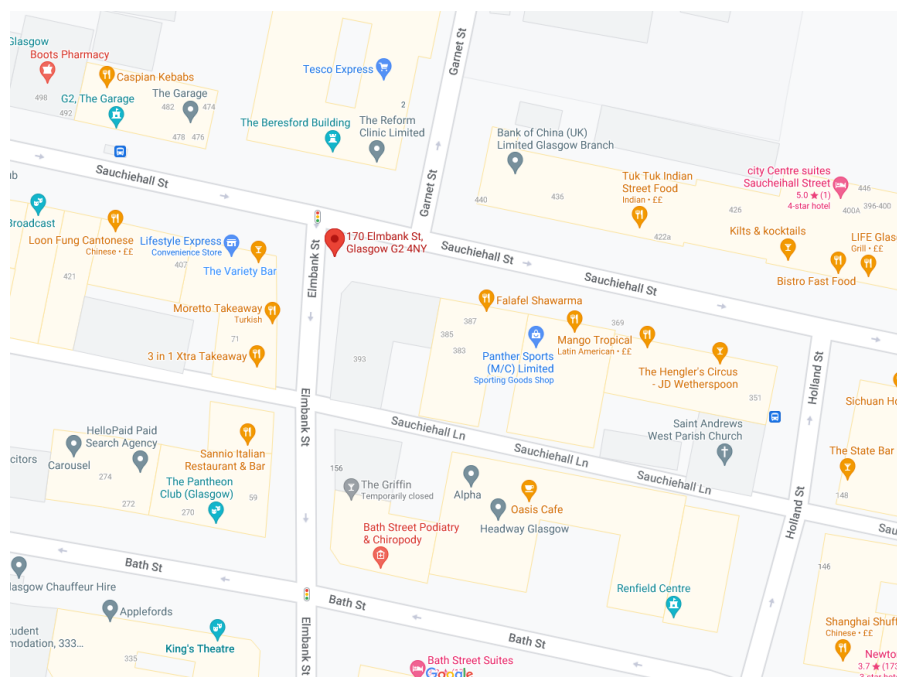
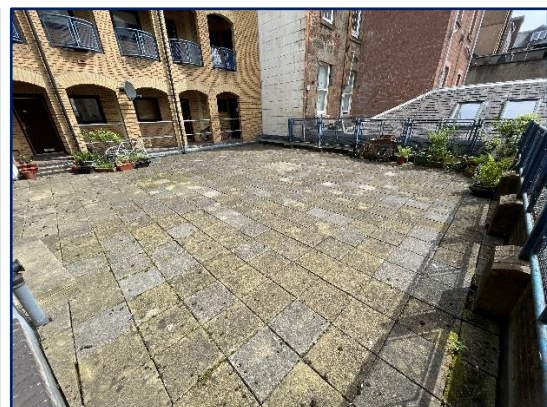
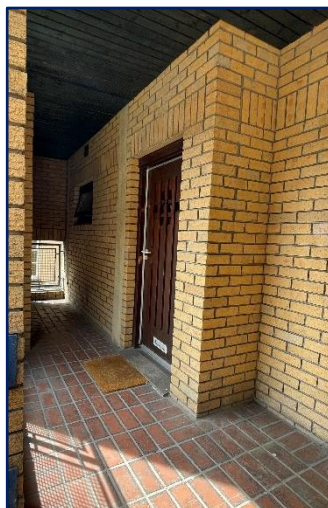
Kitchen - 2.1m x 2.5m
Window overlooking courtyard. Cooker and plumbed for automatic washing machine.



Bathroom - 2m x 2.3m
Bath, overhead shower, heated towel rail & window to courtyard.



Bedroom - 2.6m x 4.5m
Window facing out to the front of the property. Electric heater.



Other Information

- Bin chute close by
- Desired location
- Close to local University's (Caledonian, Strathclyde & Glasgow University)
- Close to local transport links (Charing Cross and Glasgow Central train station, motorway and bus station)
- Walking distance to King's Theatre, Kelvingrove Park and more local attractions
- Secured entry to the building
- Space to store bikes
- Factors - Hacking and Patterson