

8 Muirhall Road, Thornhill, DG3 5NT

Offers Over £115,000



Spacious three bedroom semi-detached house situated in the much sought after picturesque village of Thornhill. Benefits from double glazing, gardens, garage and electric heating. Thornhill, in the stunning Nithsdale Valley, is a popular village which is approximately 14 miles north of Dumfries on the A76 main road, and offers excellent primary & secondary schools, a quality 18-hole golf course, a thriving bowling club, tennis and squash clubs.



POLLOCK & MCLEAN
SOLICITORS FOR YOU AND YOUR FAMILY



Pollock & McLean
41 Castle Street
Dumfries
DG1 1DU



Measurements (all approx.)

Living Room – 4.92m x 3.40m
Rear Vestibule – 1.51m x 1.05m
Bedroom 2 – 3.82m x 3.27m

Kitchen – 3.72m x 2.82m
Bathroom – 2.10m x 1.75m
Bedroom 3 – 3.27m x 2.08m

Cupboard – 1.27m x 1.07m
Bedroom 1 – 4.36m x 3.06m



These particulars have been carefully prepared by Messrs Pollock & McLean, Solicitors and Estate Agents. Although believed to be correct they are not guaranteed and therefore prospective purchasers should satisfy themselves as to the basic facts before submitting an offer. All photographs have been taken using a wide angled lens.



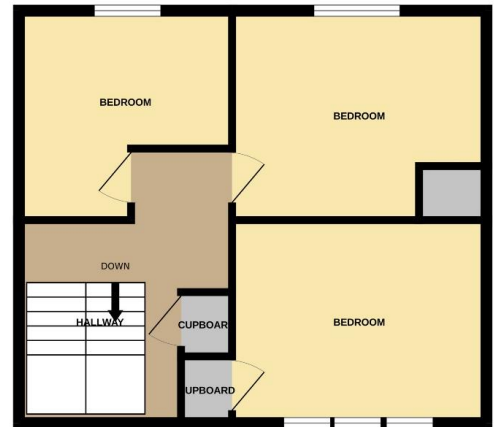
Accommodation comprises:

- Entrance hallway with understairs cupboard. Further cupboard with shelves. Window to side. Doors to living room, kitchen, bathroom and stairs to first floor.
- Bright living room with large window overlooking the front garden. Fireplace with wooden mantel and brick surround.
- Fitted kitchen with wall and base units, sink, part tiled and window to the rear. Rear vestibule with door to garden and large built-in cupboard with shelves.
- Bathroom with W. C., wash hand basin and bath. Window to rear.
- Stairs to first floor with hand rail and bannister, window to side. Built-in airing cupboard, loft hatch and doors to three bedrooms.
- Master bedroom is front facing with large window over looking the garden, built-in wardrobe with hanging rail and shelf.
- Bedroom 2 is also a double with window to rear, built-in cupboard with shelf.
- Bedroom 3 is a bright room with window to rear and side, also with built-in cupboard with rail and shelf.
- Outside there are gardens to the front and rear, driveway to side leading to garage. The rear is a good side, all laid to lawn with clothes poles and shed.



GROUND FLOOR

1ST FLOOR



Whilst every attempt has been made to ensure the accuracy of the floorplan contained here, measurements of doors, windows, rooms and any other items are approximate and no responsibility is taken for any error, omission or mis-statement. This plan is for illustrative purposes only and should be used as such by any prospective purchaser. The services, systems and appliances shown have not been tested and no guarantee as to their operability or efficiency can be given.
Made with Metroplan ©2024